

D U C T M A T E



Access Doors

ACCESS DOORS



Sandwich® Access Doors

Quick and Easy

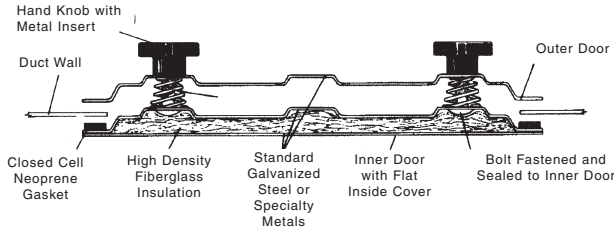
- Advanced pressure vessel design
- Insulated, Uninsulated and Specialty Metals
- No frame to install
- No measuring (self-adhesive template provided)
- Effortless opening and closing (no tools required)
- Shape provides a more effective access area



DUCTMATE®

Industries, Inc.

Rectangular



DESCRIPTION

Access door for rectangular duct.

BASIC USE

To provide easy access into air ducts and units. The door was developed to provide a solid, well-insulated, leakproof door that is simple to install.

SPECIAL CHARACTERISTICS

- Insulated or uninsulated
- Smooth interior finish on insulated doors
- Tested to 20" W.G. with no leakage noted
- Tested to negative 10" W.G. with no leakage noted
- Please specify when ordering doors for negative pressure applications
- Insulated doors are recommended for negative pressure applications

TECHNICAL INFORMATION

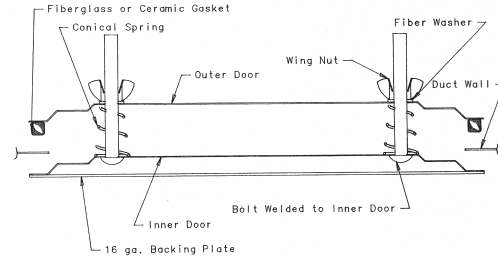
- a. PANELS**
The insulated Sandwich Access Door consists of three layers of precision stamped steel.
The inside panel consists of two layers of metal which are spot welded together along the rim encapsulating high density fiberglass insulation—UL classified FHC25/50.
Uninsulated doors have similar construction without the backing plate and insulation.
**** NOTE:** The 24" x 18" door consists of only two layers of precision stamped steel. A polyester foam pad installed between the inner and outer door panels provides insulation. (The 24"x18" door is not available with high density fiberglass insulation).
- b. GASKET**
Closed cell neoprene gasket is UL94HF1 listed with a service temperature range of (ASTM D746) -20° F to 200° F. The gasket is bonded to the inside of the door to insure consistent installations.
- c. SPRINGS**
Zinc plated conical springs are installed, between the inner and outer door, to facilitate opening.
- d. KNOBS**
Red polypropylene molded knobs have threaded metal inserts to eliminate thread stripping. Knobs are easily turned by hand. Knobs are UL94HB listed.
- e. BOLTS**
Zinc plated carriage bolts are clinched and sealed to the inner door.
- f. TEMPLATE**
Self adhesive template is provided for the exact size of duct opening required.

PACKAGING INFORMATION

SIZE	PART No.	NO. PER CARTON	LBS. PER CARTON
10" x 6"	D*106GA	10	25
12" x 8"	D*128GA	10	35
18" x 14"	D*1814GA	5	45
** 24" x 18"	D*2418GA	3	27

* Available in Insulated (I) or Uninsulated (U), please specify.

Hi-Temp



DESCRIPTION

Access door for round or rectangular duct.

BASIC USE

To provide easy access into grease duct or high-temp duct systems. The door was developed to provide a solid, leak resistant door that is simple to install.

High-Temp access door application approval resides with the authority having jurisdiction.

SPECIAL CHARACTERISTICS

- Available in all sizes of standard flat and round duct access doors
- 16 gauge black iron backing plate
- Please specify when ordering doors for negative pressure applications
- Insulated doors are recommended for negative pressure applications

TECHNICAL INFORMATION

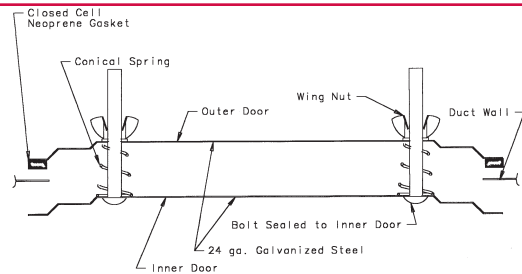
- a. PANELS**
The Hi-Temp Access Door consists of two layers of precision stamped, hot-dipped galvanized steel and one 16 gauge black iron backing plate. The backing plate is spot welded to the inside panel.
- b. GASKET**
For Hi-Temperature application fiberglass rope (1000°F max) is permanently bonded to the outside panel of the access door to eliminate leakage.
For Grease Duct application, Ceramic Fiber Gasket (2300°F max -- meets NFPA 96 standards) is permanently bonded to the outside panel of the access door to eliminate leakage.
- c. SPRINGS**
Zinc plated conical springs are installed, between the inner and outer door, to facilitate opening.
- d. KNOBS**
Zinc coated wing nuts are easily turned by hand.
- e. BOLTS**
Zinc plated carriage bolts are welded and sealed to the inner door.
- f. TEMPLATE**
Self adhesive template is provided for the exact size of duct opening required.

PACKAGING INFORMATION

SIZE	PART No.	NO. PER CARTON	LBS. PER CARTON
10" x 6"	D106*GA	10	32
12" x 8"	D128*GA	10	50
18" x 14"	D1814*GA	5	64
24" x 18"	D2418*GA	3	57

* F1 for doors rated to 1000°F. F2 for doors rated to 2300°F.

Circular Clean-Out



DESCRIPTION

Access door for duct cleaning.

BASIC USE

To provide easy access into air ducts and units. The door was developed to provide a solid, leakproof door that is simple to install.

SPECIAL CHARACTERISTICS

Tested to 20" W.G. with no leakage noted
 Tested to negative 10" W.G. with no leakage noted
 Please specify when ordering doors for negative pressure applications
 Insulated doors are recommended for negative pressure applications

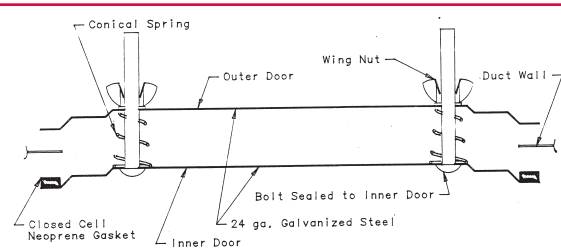
TECHNICAL INFORMATION

- a. **PANELS**
The Circular Access door consists of two layers of precision stamped, hot-dipped galvanized steel.
- b. **GASKET**
Closed cell neoprene gasket is UL94HF1 listed with a service temperature range of (ASTM D746) -20° F to 200° F. The gasket is permanently bonded to outside panel of the access door to eliminate leakage..
- c. **SPRINGS**
Zinc plated conical springs are installed over the bolts, between the inner and outer door, to facilitate opening.
- d. **KNOBS**
Zinc coated wing nuts are easily turned by hand without tools.
- e. **BOLTS**
Zinc plated carriage bolts are clinched and sealed to the inner door.

PACKAGING INFORMATION

SIZE	PART No.	No. PER CARTON	LBS. PER CARTON
8"	DC8GA	10	12
10"	DC10GA	10	17
12"	DC12GA	10	26

Clean-Out



DESCRIPTION

Access door for duct cleaning.

BASIC USE

To provide easy access into air ducts and units.

SPECIAL CHARACTERISTICS

Our lowest cost door
 Tested to 20" W.G. with no leakage noted
 Tested to negative 10" W.G. with no leakage noted
 Please specify when ordering doors for negative pressure applications
 Insulated doors are recommended for negative pressure applications

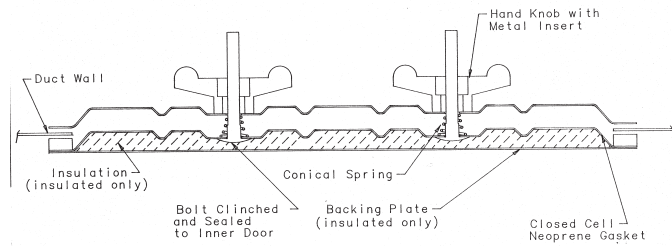
TECHNICAL INFORMATION

- a. **PANELS**
The Clean-Out Access door consists of two layers of precision stamped, hot-dipped galvanized steel.
- b. **GASKET**
Closed cell neoprene gasket is UL94HF1 listed with a service temperature range of (ASTM D746) -20° F to 200° F. The gasket is bonded to the inside of the door to insure consistent installations.
- c. **SPRINGS**
Zinc plated conical springs are installed, between the inner and outer door, to facilitate opening.
- d. **KNOBS**
Zinc coated wing nuts are easily turned by hand.
- e. **BOLTS**
Zinc plated carriage bolts are clinched and sealed to the inner door.
- f. **TEMPLATE**
Self adhesive template is provided for the exact size of duct opening required.

PACKAGING INFORMATION

SIZE	PART No.	No. PER CARTON	LBS. PER CARTON
10" x 6"	DC106GA	10	15
12" x 8"	DC128GA	10	23

Round Duct



DESCRIPTION

Access door for round ducts.

BASIC USE

To provide easy access into air ducts and units. The door was developed to provide a solid, leakproof door that is simple to install.

SPECIAL CHARACTERISTICS

Insulated or uninsulated
 Smooth interior finish on insulated doors
 Tested to 20" W.G. with no leakage noted
 Tested to negative 10" W.G. with no leakage noted
 Please specify when ordering doors for negative pressure applications
 Insulated doors are recommended for negative pressure applications

TECHNICAL INFORMATION

a. PANELS

The insulated Round Duct Access Door consists of three layers of precision stamped steel.

The inside panel consists of two layers of metal which are spotwelded together along the rim, encapsulating high density fiberglass insulation—UL classified FHC 25/50.

Uninsulated doors have similar construction without the backing plate and insulation.

**** NOTE:** The 24" x 18" access door consists of only two layers of precision stamped steel. A polyester foam pad installed between the inner and outer door panels provides insulation. (The 24" x 18" door is not available with high density fiberglass insulation).

b. GASKET

Closed cell neoprene gasket is UL94HF1 listed with a service temperature range of (ASTM D746) -20° F to 200° F. The gasket is bonded to the inside of the door to insure consistent installations.

c. SPRINGS

Zinc plated conical springs are installed, between the inner and outer door, to facilitate opening.

d. KNOBS

Red polypropylene molded knobs have threaded metal inserts to eliminate thread stripping. Knobs are easily turned by hand. Knobs are UL94HB listed.

e. BOLTS

Zinc plated carriage bolts are clinched and sealed to the inner door.

f. TEMPLATE

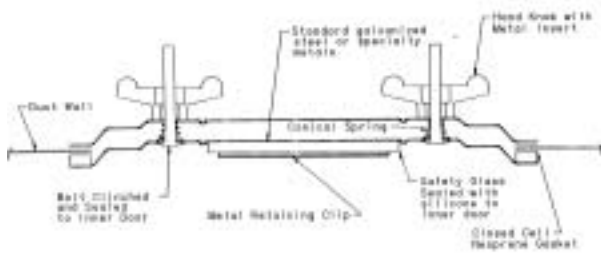
Self adhesive template is provided for the exact size of duct opening required.

PACKAGING INFORMATION

DOOR SIZE	DUCT SIZE	PART NUMBER
8" x 4" 10 per carton 12 lbs. per carton	5" - 6"	DR*846GA
	7" - 9"	DR*849GA
	10" - 11"	DR*8411GA
	12" - 14"	DR*8414GA
12" x 8" 10 per carton 35 lbs. per carton	10" - 11"	DR*12811GA
	12" - 14"	DR*12814GA
	15" - 16"	DR*12816GA
	17" - 18"	DR*12818GA
	19" - 20"	DR*12820GA
16" x 12" 5 per carton 31 lbs. per carton	15" - 16"	DR*161216GA
	17" - 18"	DR*161218GA
	19" - 20"	DR*161220GA
	21" - 22"	DR*161222GA
	23" - 24"	DR*161224GA
	25" - 28"	DR*161228GA
	29" - 32"	DR*161232GA
	33" - 36"	DR*161236GA
24" x 18" available in 2 panel only ** 2 per carton 25 lbs. per carton	29" - 32"	DR*241832GA
	33" - 36"	DR*241836GA
	37" - 40"	DR*241840GA
	41" - 44"	DR*241844GA
	45" - 48"	DR*241848GA
	49" - 52"	DR*241852GA
	53" - 56"	DR*241856GA
	57" - 62"	DR*241862GA
	63" - 144"	Consult Factory

* Available in Insulated (I) or Uninsulated (U), please specify.

Observation



DESCRIPTION

Access door which allows inspection of the inside of the duct without door removal.

BASIC USE

To provide easy access into air ducts and unit and allow for viewing the inside of the duct. The door was developed to provide a solid, leakproof door that is simple to install.

SPECIAL CHARACTERISTICS

- 4" x 2-5/8" viewport
- Safety glass used for window
- Tested to 20" W.G. with no leakage noted
- Tested to negative 10" W.G. with no leakage noted
- Please specify when ordering doors for negative pressure applications
- Insulated doors are recommended for negative pressure applications

TECHNICAL INFORMATION

- PANELS**
The Observation Access Door consists of two layers of precision stamped, hot-dipped galvanized steel.
- GASKET**
Closed cell neoprene gasket is UL94HF1 listed with a service temperature range of (ASTM D746) -20° F to 200° F. The gasket is permanently bonded to the inside panel to eliminate leakage.
- SPRINGS**
Zinc plated conical springs are installed, between the inner and outer door, to facilitate opening.
- KNOBS**
Red polypropylene molded knobs have threaded metal inserts to eliminate thread stripping. Knobs are easily turned by hand. Knobs are UL94HB listed.
- BOLTS**
Zinc plated carriage bolts are clinched and sealed to the inner door.
- GLASS**
Safety glass (1/4") is permanently sealed with silicone. Plexi-glass may be installed if requested.
- CLIPS**
Hot-dipped galvanized steel clips mechanically fasten the safety glass in place.
- TEMPLATE**
Self adhesive template is provided for the exact size of duct opening required.

PACKAGING INFORMATION

SIZE	PART NO.	NO. PER CARTON	LBS. PER CARTON
10" x 6"	DO106GA	10	25

THE FOLLOWING APPLY TO ALL ACCESS DOORS:

INSTALLATION INSTRUCTIONS

1. Peel backing off template and apply to duct in desired location.



2. Opening can be cut with hand-held plasma cutter or by conventional methods.



3. Insert door into opening at an angle and tighten knobs.



4. Do not overtighten knobs.



PRODUCT GUARANTEE

All Access Doors are guaranteed against defective material.



CHARLEROI, PA
210 Fifth Street
Charleroi, PA 15022
800-245-3188
724-258-0500
FAX: 724-258-5494

LODI, CA
810 S. Cluff Avenue
Lodi, CA 95240-3141
800-344-3270
209-333-4680
FAX: 209-333-4678

www.ductmate.com

Distributed By:

Ductmate is a proud member
of the following organizations:

